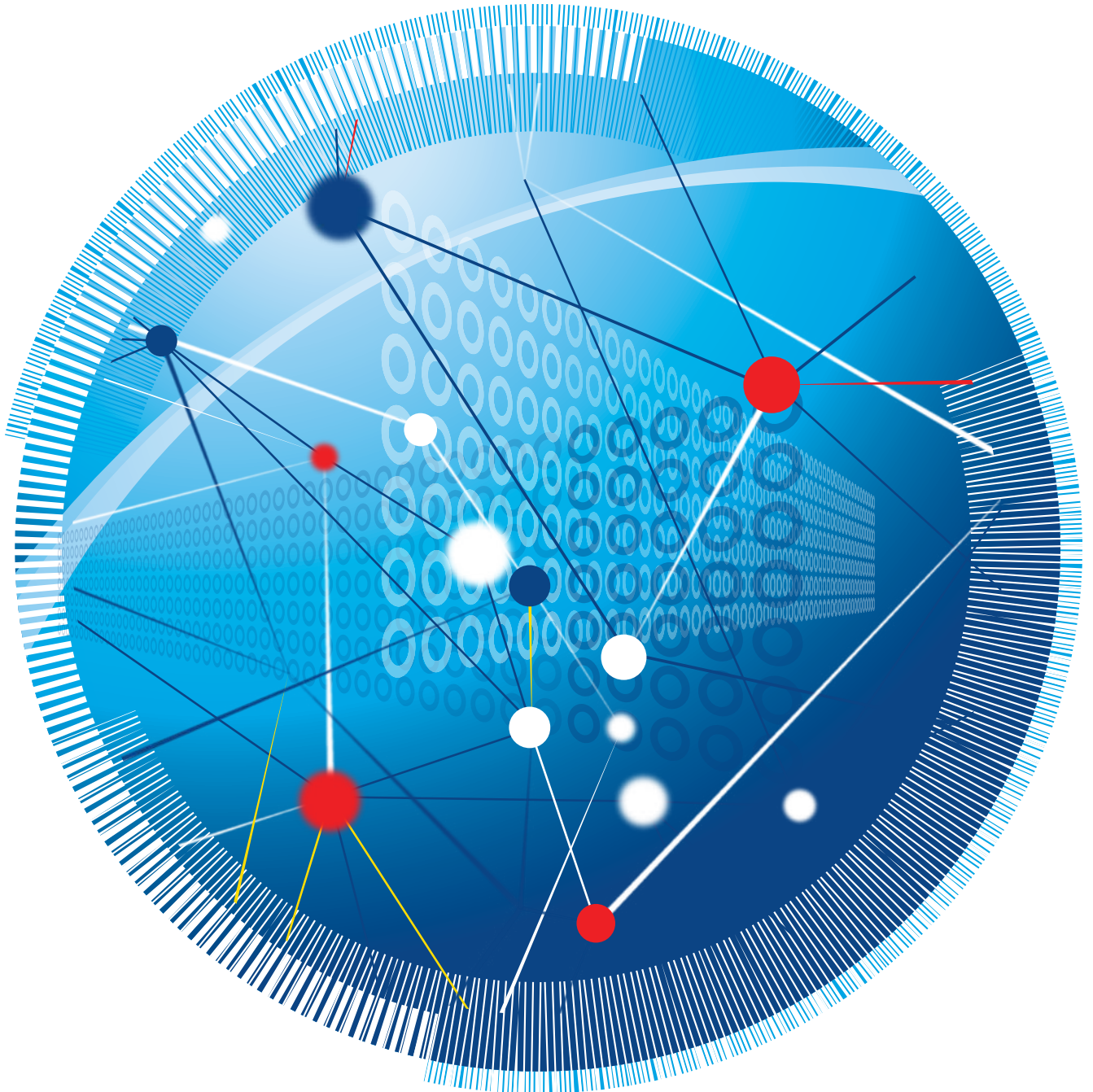


## PROGRAM



**LGNSW  
ANNUAL  
CONFERENCE**

**WARWICK FARM  
14-16 OCTOBER 2019**





## The feeling's mutual. StateCover Mutual.

Dedicated employees form the backbone of every council. As a leader, making sure your staff enjoy a safe, secure work environment by pro-actively managing workplace risk can be challenging.

When you partner with StateCover, you really are putting your employees first. That's because we reinvest surplus funds into delivering outstanding Member benefits such as more affordable premiums and superior return to work outcomes.

We have more than 18 years' experience as a mutual specialising in local government, giving us an invaluable in-depth perspective into workplace risk for NSW councils. Our Members benefit from direct access to our dedicated industry experts, leading-edge resources, sector-specific knowledge and tailored workplace risk solutions.

Want to look after the best interests of your employees by implementing best practice injury prevention and management strategies? Want to keep your employees safe, healthy, and productive at work? The feeling's mutual. StateCover Mutual.

Find out more by dropping by the StateCover stand or get in touch at [memberservices@statecover.net.au](mailto:memberservices@statecover.net.au)



# WELCOME



## Welcome from the President

Cr Linda Scott

Welcome to the 2019 LGNSW Annual Conference: an opportunity to share ideas, seek inspiration, and help determine our sector's policy directions for the coming year. Our host city of Liverpool offers a wonderful location to interact with colleagues and debate the issues we all face.

Innovation is our theme for 2019, so it is fitting that we have added a one-off event, a Meet the Politicians Breakfast, where we will be joined by Premier Gladys Berejiklian, Opposition Leader Jodi McKay, Deputy Premier John Barilaro, Local Government Minister Shelley Hancock and Shadow Local Government Minister Greg Warren, alongside members of the crossbench. All have taken time out of a parliamentary sitting week to be with us; an illustration of an increasingly constructive and collegiate relationship with our state colleagues.

The past 12 months have been action-packed, with state and federal elections and a run of advocacy wins, illustrating local government's power when we act together on issues affecting all our communities. We secured an increase of \$60m in library funding, a reversal on the emergency service levy, with the NSW Government announcing it will cover the first year of the price hike for all councils, and finally secured the release of three long-awaited IPART reports (including the rating review) – documents critical to the future sustainability of local government in NSW.



## Welcome to Liverpool

Mayor Wendy Waller  
Liverpool City Council

Our warmest welcome to esteemed colleagues, sponsors and special guests at the 2019 Local Government NSW Annual Conference in Liverpool, on Darug land.

We are proud to host you at premier event facilities in Liverpool such as The William Inglis Hotel and Casula Powerhouse Arts Centre. The William Inglis Hotel's presence in Liverpool reflects burgeoning investment in the area and faith in our bright future. Casula Powerhouse Arts Centre is one of the most popular arts and culture destinations in Sydney and is known for championing diverse voices. Both venues speak to the changes in Liverpool and the things that make us who we are.

With your help championing key priorities in the lead up to the state election we secured: an additional \$355m for drought assistance (with a further \$78m announced by the NSW Government at the end of August 2019); substantial investment in water infrastructure to secure town water supplies (primarily through the \$1b Safe and Secure Water Program); action on cost shifting with a commitment to take back up to 15,000km of regional roads; and \$1b in new funding to fix local roads and timber bridges.

Our advocacy in the planning space has achieved a further three-month pause on the implementation of the medium density housing code and the long-awaited appointment of a NSW Building Commissioner. We've also worked with joint organisations to win \$1.95m in additional funding to support them.

And we continue to provide expert advice and assistance to our members through a range of services including industrial relations and legal advice, professional development, training and learning programs, and human resources and executive services.

These are just a few recent examples of the great things we have achieved. Of course, there are still many challenges ahead on a range of issues from waste and recycling to cost shifting and infrastructure funding. I'm looking forward to debating the motions brought to conference by you and your colleagues and getting on with the business of shaping LGNSW's advocacy for the year ahead.

I take this opportunity to thank the LGNSW Board, which has given such support and strength to councils across the state. I also thank our dedicated and wonderful LGNSW staff, who help us achieve so much each and every day for NSW local governments.

I thank the generous support of our sponsors: Elite Sponsor StateCover Mutual Limited; Premier Sponsor Statewide Mutual; Planning Sponsor NSW Office of Emergency Management; Transport Sponsor Transport for NSW, Distinguished Sponsors Local Government Super, the Office of the NSW Business Commissioner, and JLT; and of course, all our trade exhibitors, who will showcase the latest products and services available to the sector.

Liverpool's journey from the fringes of Sydney to its third CBD and the gateway city to the Western Sydney International Airport is remarkable. And, most importantly, it would not be possible without effective decision-making and collaboration across all levels of government.

It is fitting that this year's conference guests will gather in our city to participate in workshops that will strengthen local governments – particularly in the ways councils operate and collaborate with each other, State and Federal governments to serve our communities. As the tier of government closest to the people, it is important that our voices are heard and respected at a State and Federal level. Our residents are counting on us.

I trust you will enjoy your visit to Liverpool, one of the most multicultural and rapidly growing cities in Australia. There is plenty of experience and I encourage you to make the most of your time here.

# CONFERENCE PROGRAM

## PRE – OPENING OPTIONAL WORKSHOPS AND SPECIAL EVENTS

**MONDAY 14 OCTOBER** / William Inglis Hotel, 155 Governor Macquarie Drive, Warwick Farm

7.00am – 9.30am	Meet the Politicians Breakfast, <i>Sales Arena</i> Addresses from <b>The Hon Gladys Berejiklian MP</b> , Premier of NSW, <b>The Hon Shelley Hancock MP</b> , Minister for Local Government and other ministers and politicians representing key portfolios. <i>The breakfast is an optional event as part of the LGNSW Annual Conference program and attendance is free to all members who have pre-booked as part of conference registration.</i>
9.30am – 4.30pm	<i>Registration opens, outdoor covered area between conference room and exhibition</i>
9.45am – 2.30pm	Western Sydney Airport Tour and Site Visits, off site bus tour Liverpool Council representatives will lead an educational tour to the newly opened Western Sydney International Airport (WSA) – Airport Experience Centre. Representatives will discuss the Fifteenth Avenue Smart Transit (FAST) project which seeks to deliver a rapid transit corridor between Liverpool city centre and Western Sydney Airport. It will finish with a tour of recently opened Casula parklands and an overview of Council's plans for the banks of Georges River. <i>Access to the tour will be for ticket holders only. Tickets include bus transfer, morning tea and lunch at The Paper Mill Firepit Restaurant.</i>
10.00am – 4.30pm	Councillor Training Workshops <b>SOLD OUT</b> Transport for NSW (TfNSW) Workshops and Information Sessions <i>Access to workshops will be for ticket holders only. A bus transfer shuttle will operate throughout the day, returning delegates to conference accommodation.</i>
10.00am – 12.00pm	Workshop 1a - Financial Decision-Making in Local Government, <i>Garden Pavilion</i> Workshop 1b - Understanding and Measuring Social Impact, <i>Grand Armee</i> TfNSW Workshop – Road Safety Plan update, <i>Pavilion B</i>
1.00pm – 2.30pm <i>Arrive at 12.30pm for lunch</i>	Workshop 2a - Land Use Planning for Councillors, <i>Garden Pavilion</i> Workshop 2b - Update on the Code of Conduct, <i>Grand Armee</i> TfNSW Workshop - Movement and Place Framework, <i>Pavilion B</i>
2.35pm	High-Performance Vehicle demonstration (HPV), <i>Outside at entrance to hotel reception</i>
3.00pm – 4.30pm <i>Arrive at 2.45pm for afternoon tea</i>	Workshop 3a - Local Government Procurement: Efficiencies and Opportunities, <i>Grand Armee</i> Workshop 3b - Speaking and Debating Skills, <i>Garden Pavilion</i> TfNSW Information Session - High-Performance Vehicles (HPVs), <i>Pavilion B</i>
<i>From 5.30pm</i>	<i>Bus transfers to Casula Powerhouse for welcome reception begin departing from William Inglis Hotel and will loop to all conference hotels listed on website.</i>

## CONFERENCE OPENS – WELCOME RECEPTION

Casula Powerhouse Arts Centre, 1 Powerhouse Road, Casula (enter via Shepherd Street, Liverpool)

6.00pm – 8.00pm	President's Opening Ceremony followed by welcome reception: <ul style="list-style-type: none"> <li>• Address by <b>Cr Linda Scott</b>, President, LGNSW</li> <li>• Welcome by <b>Cr Wendy Waller</b>, Mayor, Liverpool City Council</li> <li>• Sponsor Address by <b>Ms Rebecca Ryan</b>, Chair, Statewide Mutual and General Manager, Blayney Shire Council</li> </ul> Registration will be available at this event.
<i>From 7.30pm</i>	<i>Bus transfers back to conference hotels begin</i>

## TUESDAY 15 OCTOBER – Business Session Day 1 / William Inglis Hotel

7.30am – 5.00pm	Registration opens, outdoor covered area between conference room and exhibition
8.00am – 9.00am	<input checked="" type="checkbox"/> Voting for LGNSW Board President, Vice-Presidents, Treasurer and Directors, Garden Pavilion Voting for all positions at the one time
8.00am – 4.00pm	Trade exhibition opens, The Big Barn and Exhibition Stables Delegate Lounge sponsored by Transport for NSW open for networking, Pavilion B
8.45am	Doors open for conference official proceedings, Sales Arena Distribution of voting materials and electronic handsets
9.05am – 9.10am	Conference introduction by <b>Tara McCarthy</b> , Chief Executive, LGNSW
9.10am – 9.15am	Welcome to Country on behalf of Gandangara Aboriginal Land Council, <b>Uncle Malcolm Maccoll</b>
9.15am - 11.00am	Address by <b>Cr Linda Scott</b> , President, LGNSW Opening of the Federal Conference, chaired by <b>Cr Linda Scott</b> , including demonstration of voting units, adoption of standing orders, presentation of the auditor's report, general financial report and operating report to members, business session and consideration of motions. Opening of the State Conference, chaired by <b>Cr Linda Scott</b> , including adoption of standing orders, presentation of the auditor's report, general financial report and operating report to members, business sessions, and consideration of motions.
9.45am	Address from <b>Mayor David O'Loughlin</b> , President, Australian Local Government Association
11.00am – 11.30am	Morning tea in trade exhibition sponsored by <b>Local Government Super</b> , The Big Barn and Exhibition Stables <input checked="" type="checkbox"/> Voting for LGNSW Board President, Vice-Presidents, Treasurer and Directors, Garden Pavilion
11.30am – 1.00pm	Consideration of conference business continued, chaired by LGNSW President
1.00pm – 2.00pm	Lunch in trade exhibition sponsored by <b>NSW Office of Emergency Management</b> , The Big Barn and Exhibition Stables <input checked="" type="checkbox"/> Voting for LGNSW Board President, Vice-Presidents, Treasurer and Directors, Garden Pavilion
1.00pm – 2.00pm	StateCover General Manager's Lunch, The Sky High Room, Level 2, JHB Carr Stand, Warwick Farm Racecourse, (next door to The William Inglis Hotel)
2.00pm – 3.30pm	Consideration of conference business continued, chaired by LGNSW President
3.30pm – 4.00pm	Afternoon tea in trade exhibition, The Big Barn and Exhibition Stables <input checked="" type="checkbox"/> Voting for LGNSW Board President, Vice-Presidents, Treasurer and Directors, Garden Pavilion
4.00pm – 5.00pm	Consideration of conference business continued, chaired by LGNSW President Collection of all electronic handsets and motions voting cards Conference business session closes
5.00pm - 6.00pm	Transfer buses begin to conference hotels
<b>CONFERENCE DINNER</b> William Inglis Hotel, 155 Governor Macquarie Drive, Warwick Farm	
7.30pm	Doors open for dinner, Sales Arena
8.00pm	LGNSW President introduces Elite Sponsor, StateCover LGNSW President and Elite Sponsor present the AR Bluett Awards and Outstanding Service Awards for elected members
8.30pm	Dinner and entertainment
10.00pm	Transfer buses begin to conference hotels
11.00pm	Dinner closes

# CONFERENCE PROGRAM *(Continued)*

## WEDNESDAY 16 OCTOBER – Business Session Day 2 / William Inglis Hotel

7.30am – 5.00pm	Conference registration opens, outdoor covered area between conference room and exhibition
7.30am – 8.45am	Australian Local Government Women's Association (ALGWA NSW) Breakfast, <i>The Big Barn</i> sponsored by Multicultural NSW Women in Leadership Panel: Facilitated by <b>Ellen Fanning</b> . <i>The Big Barn</i> exhibition area will be closed during this event and access will be for ticket holders only.
8.00am – 4.00pm	Trade exhibition opens, <i>The Stables</i>
8.45am – 4.00pm	ALGWA breakfast closes, trade exhibition opens, <i>The Big Barn</i>
8.45am	Doors open for conference official proceedings, Sales Arena Distribution of voting materials and electronic handsets if required
9.00am	Introduction by <b>Ms Ellen Fanning</b> , Master of Ceremonies
9.05am – 9.25am	Recycling campaign launch <b>Cr Linda Scott</b> , President, LGNSW
9.25am – 9.30am	Innovating with Responsible Investment: Local Government Super
9.30am – 10.10am	Opening keynote: Overcoming the Barriers to Innovation <b>Mr James O'Loghlin</b> , Broadcaster, author, innovation expert
10.10am – 10.35am	Address from <b>Cr Linda Scott</b> , President, LGNSW, on Association Initiatives
10.35am – 10.45am	Treasurer's report from <b>Cr Marjorie O'Neill</b> , Treasurer, LGNSW
10.45am – 10.50am	Partnering to Innovate: NSW Small Business Commissioner
10.50am – 11.25am	Morning tea in trade exhibition sponsored by NSW Small Business Commissioner, <i>The Big Barn</i> and <i>Exhibition Stables</i>
11.25am – 12.05pm	Presentation: Disruptive by Design: A Collaborative Approach to Solving Wicked Problems <b>Mr Paul Hawkins</b> , Chief Combobulator, Crazy Might Work
12.05pm – 12.55pm	Innovation Spotlight. Panel facilitated by <b>Ellen Fanning</b> <i>A panel shining a spotlight on councils that have used innovative approaches to tackle common problems facing local government.</i>
12.55pm – 1.00pm	Partnering to Innovate: NSW Office of Emergency Management
1.00pm – 2.00pm	Lunch in trade exhibition, sponsored by JLT, <i>The Big Barn</i> and <i>Exhibition Stables</i>
2.00pm – 2.05pm	Partnering to Innovate: JLT
2.05pm – 3.05pm	Closing keynote address: <b>Mr Chris Riddell</b> , Global Futurist Chris spends his life connecting with businesses and individuals, across industries, and around our hyper-connected digital world. With a talent for analysing emerging trends, patterns and behaviours, Chris' insights are compelling, thought provoking and inspirational.
3.05pm – 3.15pm	Close of conference, <b>Cr Linda Scott</b> , LGNSW President
3.15pm – 3.45pm	Afternoon tea in trade exhibition.

This program is correct at the time of printing. Speakers and program details may have changed due to unforeseen circumstances.

This year's conference will aim to create discussion and inspire new thinking about how councils can best address their challenges through INNOVATION.

Using keynote speakers, corporate presentations and case studies, we will explore how councils can work together to develop innovative approaches to tackle common problems facing them in the provision of services.



**James O'Loghlin**  
Broadcaster, Author,  
Innovation Expert

Many of us want to focus more on innovation and improving our way of operating, but find that at the end of the year, for some reason, it just hasn't happened. What went wrong? What factors stop us from being innovative, and how can we overcome them? In this informative and entertaining keynote illustrated with relevant case studies, former host of 'The New Inventors' and innovation expert James O'Loghlin will share easy-to-implement strategies to overcome those barriers.



**Paul Hawkins**  
Founder and Chief Combobulator,  
Crazy Might Work

Crazy Might Work is a national leader in innovation, with a mission to equip and inspire people and organisations to innovate, collaborate and make a difference! Paul's presentation will inspire you to harness world-leading innovation frameworks, social and neuroscience to tackle the most complex of community challenges. You will learn why change is painful, how to innovate collaboratively; and how to drive effective behavioural change.

## Innovation Spotlight Panel

This panel will feature case studies spotlighting innovative approaches to tackle common problems facing local government. Case studies include:

- The Smart Beaches Project
- Namoi Unlimited, The International Engagement Project, China
- Smart Cities, Smart Liverpool, Smart Pedestrians
- Smart Social Spaces, Smart Street Furniture
- Trial of recycled glass pavement on new Pacific Highway
- City of Newcastle's Smart City Strategy



**Chris Riddell**  
Futurist

Chris is an award-winning global futurist and industry recognised inspirational keynote speaker on emerging trends in our hyper-connected world. He is a global pattern hunter, discovering and identifying how humans are changing and adapting to high-speed change, unlocking insights for businesses and leaders in today's highly disrupted digital world.



# INFORMATION

LGNSW ANNUAL  
CONFERENCE  
PROGRAM 2019

6

## Registration Opening Hours

Monday 14 October, 9.30am – 4.30pm

Tuesday 15 October, 7.30am - 5.00pm

Wednesday 16 October, 7.30am – 5.00pm

All conference attendees need to register at the registration desk to receive a lanyard for identification during the conference. All delegates and sponsors should be registered online before attending the conference. For all cancellations, name badges and replacement delegate information, please contact the registration desk.

Special guests or speakers should make themselves known at the registration desk or ask to be directed to LGNSW events staff.

Delegate registration fees cover business papers, the President's Opening Reception, two-day business sessions (including arrival coffee, morning, afternoon tea and lunch) a name badge and a conference bag. The cost to attend is heavily subsidised by LGNSW and sponsorships.

## Voting at the Conference

If you are the voting representative for your council, you must be in the Sales Arena on Tuesday 15 October so a quorum can be achieved.

All voting will be by electronic handsets. A delegate plastic voting card will be distributed at registration. The plastic voting card must be returned at the end of the voting day or a fee of \$100 per card will be invoiced to councils. Electronic handsets will be distributed on entering the Sales Arena at the rear of the room and a demonstration of the cards and electronic handsets will be given prior to business motion voting. Lanyards will also identify those who are voting delegates.

## Changes to Voting Delegates

To change a voting delegate at the conference, see the voting delegate substitution registration desk for a nomination form (to be signed by your general manager), transferring the voting right.

## Business Papers

Member councils will receive a printed copy for each registered voting delegate of the business paper one week before the conference. Papers will also be available to download from the LGNSW website and the conference app.

## Commitment to Environmental Sustainability

Local Government NSW is committed to ensuring the LGNSW Annual Conference 2019 is organised and conducted in a sustainable manner to reduce the impact on the planet. The event will adhere to LGNSW Principles and Guidelines for Event Sustainability (version 4.4). A full list of sustainability measures is on the LGNSW website.

## Conference Venue

The conference will take place in the William Inglis Hotel, 155 Governor Macquarie Drive, Warwick Farm. The Sales Arena is the venue for plenary sessions. Registration and the trade exhibition will be under cover between the main conference room and trade exhibition. Workshops will take place in the Garden Pavilion and Grand Armee.

The trade exhibition is on the external grounds of the hotel in The Big Barn and Stable B. A delegate lounge with access to device charging stations is in Pavilion B, The Big Barn and Stable B and is sponsored by Transport for NSW.

## Coach Transfers

Complimentary coach transfers will be offered between the conference venue to social functions each day from the conference accommodation listed below, courtesy of Liverpool Council. Should you require a transfer it must be booked as part of your registration.

Transfer hotels include:

- The William Inglis Hotel Warwick Farm
- Holiday Inn Warwick Farm
- Quest Liverpool
- Rydges Bankstown
- Ramada Hotel Cabramatta
- Mercure Liverpool
- Quest Campbelltown
- Best Western Casula

A subsidised coach transfer will return to Sydney Domestic Terminal on Wednesday 16 October from the William Inglis Hotel at 4.30pm. The charge is \$22 per person. If you have not already booked this and would like to do so please let staff know on the registration desk.

## Parking

The William Inglis Hotel has a car park and parking is complimentary. Entry is off Governor Macquarie Drive.

## Accessibility

The William Inglis Hotel is an accessible venue and has wheelchair access to all areas via ramps and lifts. LGNSW has connected hearing loops in the main conference locations.

## Wi-Fi

For internet access  
Username: Riverside Stables  
Select: Free Internet Access

## Social Media

If you are posting conference content on Twitter, LinkedIn, Instagram or Facebook, please use #LGNSW2019.

## Photography

Camera Creations is the appointed photographer for the conference and will take pictures during sessions and social functions. If you have your picture taken, it is assumed you consent to LGNSW using the images. Images may be used for print and electronic publications with the approval of LGNSW.

## Childcare Arrangements

If delegates require childcare, please contact [www.dummiesandplaydates.com.au](http://www.dummiesandplaydates.com.au) or phone 0412 791 528.

## Conference Feedback/Surveys

After the conference, LGNSW will send all councils an electronic survey to gather views on the conference proceedings and procedure. All feedback is appreciated and helps us further improve LGNSW events.



## Delegate App

There is a delegate app available to use at the conference. The app includes the delegate list, links to program and business papers, speaker profiles, a message facility to other delegates, and other useful information. You can upload the app to your device via the link emailed to you before the conference or via your App store searching for 'LGNSW 2019'. If you require assistance with the app on site, please see staff at the registration desk.

## Delegate Contact Details

Please note that a nametag scanning facility will be available on site for sponsors and exhibitors to scan delegates' nametags, resulting in delegate contact details going straight to the scanning sponsor and exhibitor. It is your choice to have your contact details passed on to our supporters. By registering for the conference, you are deemed to have acknowledged and accepted this process and are aware that by allowing your nametag to be scanned your contact details will be shared with the scanning sponsor.

## Conference Contacts

LGNSW has appointed a conference secretariat who will be available at the registration desk to answer sponsorship and trade exhibition enquiries and assist with any registration issues. Conference Secretariat details:

**Bradley Hayden**

Countrywide Conference and Event Management

**Email:**

[bradley@cce.com.au](mailto:bradley@cce.com.au)

**Phone:**

0412 461 392

## Cancellation Policy

Should you be unable to attend once registered, a substitute delegate is welcome to attend in your place at no additional charge. All cancellations and amendments must be advised in writing to Conference Secretariat Bradley Hayden at [Bradley@cce.com.au](mailto:Bradley@cce.com.au). Cancellations made by 5pm on Tuesday 1 October 2019 will be eligible for a refund less a \$220 administration fee per registration. Cancellations made after 5pm on this date are not refundable.

## Privacy

When you register for the conference, LGNSW collects personal information from you to process your registration.

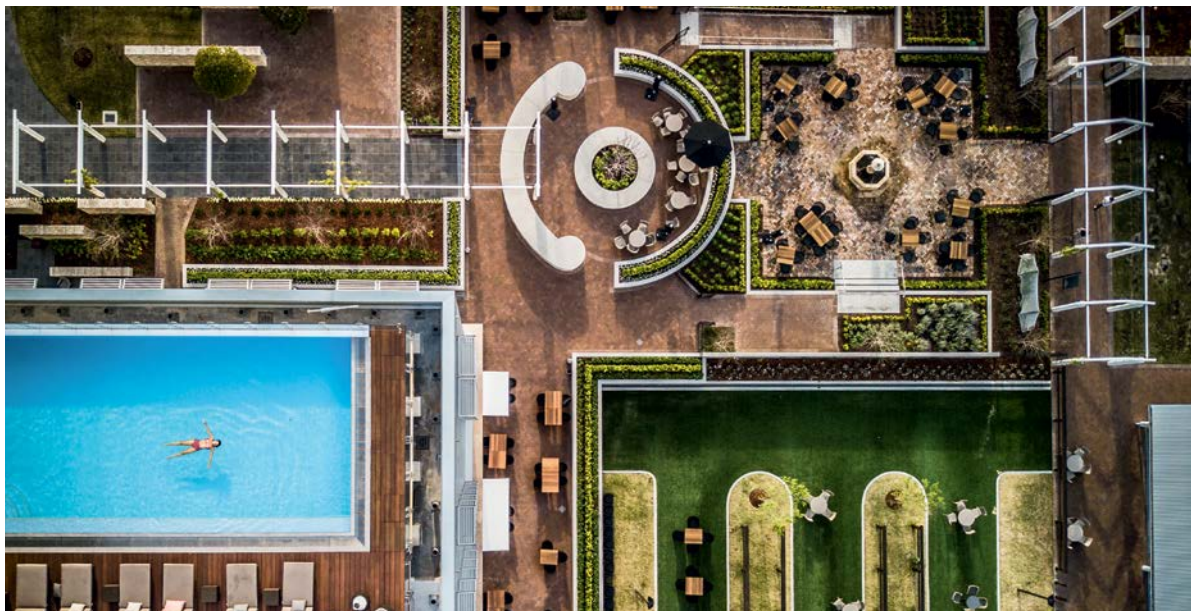
If you do not provide or we cannot otherwise collect all the information we request or need, we may not be able to register you for the conference.

LGNSW may disclose your personal information to third party conference organisers and third-party service providers, who may be located overseas and may store your information overseas.

We may, with your consent where required, use your contact details to send you (by telephone, post, email or SMS) marketing communications about our programs, products, services, promotions and events. You can opt out of marketing communications at any time, by particular means or at all, by following the unsubscribe function in the message we send, or by emailing or calling us.

Our privacy policy, which is available at [lgnsw.org.au/privacy](http://lgnsw.org.au/privacy) or by emailing or calling us on the details below, explains more about the types of personal information we usually collect and how we handle your personal information, as well as how you can request access to and correct personal information we hold about you, how you can complain about our handling of your personal information and how we deal with complaints.

For privacy related enquiries please contact us on 02 9242 4000, e-mail [lgnsw@lgnsw.org.au](mailto:lgnsw@lgnsw.org.au) or at GPO Box 7003, Sydney NSW 2001.



William Inglis Hotel

# SOCIAL PROGRAM

LGNSW ANNUAL  
CONFERENCE  
PROGRAM 2019

8

## President's Opening Reception

Monday 14 October, 6.00pm – 8.00pm  
Casula Powerhouse Arts Centre,  
1 Powerhouse Road Casula  
(Enter via Shepherd Street Liverpool)  
Dress Code: Smart casual for indoor/outdoor  
evening event.

*Transfer buses leave from the William Inglis Hotel and various hotels from 5.30pm and will loop back to the same hotels from 7.30pm.*



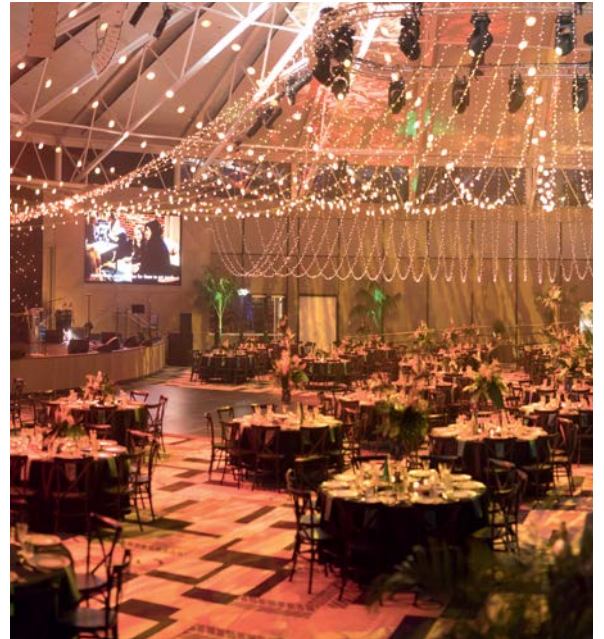
Left: Casula Powerhouse

Right: William Inglis Hotel  
Sales Arena

## Conference Gala Dinner A Touch of Gold

Tuesday 15 October, 7.30pm – 11.00pm  
Sales Arena, The William Inglis Hotel  
Dress Code: Cocktail lounge suit with a touch of gold  
Cost \$110

*Dinner will be allocated seating. If you have any changes to your seating preference, please see the registration desk. Transfer buses will collect from the conference accommodation and various hotels from 7.00pm and will loop back to the same hotels from 11.00pm.*



Join special guests, fellow councillors, the LGNSW Board, general managers, sponsors and speakers for an official welcome and informal cocktail reception at Casula Powerhouse Arts Centre. Hear the symphonic tones of River City Voices choir, renowned for its vocal excellence, special artistic programs and events.

Grab a drink and take a guided tour through the art gallery and view the exhibitions *One Past Liverpool*, which marks the 25th anniversary of Casula Powerhouse as an arts centre, and *Body Remembers*. To consider the 25th anniversary milestone, a group of artists under the age of 25 was commissioned to create a new work by engaging our extensive archive and through conversations with many prominent Australian artists, curators and producers behind the centre's projects.

Presented by premier sponsor  
**Statewide Mutual**



Enjoy an exclusive performance by Tom Burlinson, one of Australia's most popular and successful actors and entertainers. He is currently performing the role of Billy Flynn in the hit musical 'Chicago'. If you've ever seen his live musical shows paying tribute to Frank Sinatra and others, you'll know we're in for something very special tonight.



Tom Burlinson

Tom's swinging band will entertain you throughout the evening.

Presented by elite sponsor  
**StateCover**



# SPECIAL EVENTS

## Western Sydney Airport Tour, off site bus tour

Monday 14 October, 9.45am – 2.30pm

Buses depart from outside of hotel front entrance.

The tour will be for ticket holders only. Tickets can be purchased in advance when registering for conference and include bus transfer, morning tea and lunch at The Paper Mill Firepit Restaurant.

Liverpool Council representatives will lead a tour to the newly opened Western Sydney Airport (WSA) – Airport Experience Centre. Hear about the Fifteenth Avenue Smart Transit (FAST) project, which seeks to deliver a rapid transit corridor between Liverpool City Centre and Western Sydney Airport. It will finish with a tour of recently opened Casula parklands and an overview of Council's plans for the banks of Georges River.

## Delegates' Lounge, Pavilion B

Monday 14 October, Workshops and Information Sessions

Tuesday 15 and Wednesday 16 October, Delegates' Lounge

Access to training workshops is free and includes lunch and afternoon tea, but you need to register to attend.

Senior members from Transport for NSW will be available throughout the conference to discuss Transport's new operating model and ways of working with local government, including projects, programs and policies across roads and public transport in Regional, Outer Metropolitan and Greater Sydney. In addition, TfNSW will hold workshops on Monday 14 October as follows:

### Workshop 10.00am - 12.00pm, Pavilion B

The NSW Government has a vision of zero trauma on the transport network by 2056. In 2018, the Government released the Road Safety Plan 2021, which prioritises key actions to be implemented over five years to reduce deaths and serious injuries on NSW roads.

The information session will provide an update on implementation of the plan and priorities for 2019-20.

### Workshop 1.00pm - 2.30pm, Pavilion B

An opportunity for early local government feedback on the NSW Government's Movement and Place Framework to guide all levels of government on how to balance movement and place principles in the design, planning, construction and operation of NSW's transport network to achieve better community outcomes.

2.35pm

Onsite demonstration of a high-performance vehicle, an A-Double truck.

### Information session 3.00pm - 4.30pm, Pavilion B

The information session will outline the specifics and benefits of the latest High-Performance Vehicles (HPVs) and their ability to transform the NSW freight task and benefit our community.

Sponsored by **Transport for NSW**



## General Managers' Lunch Briefing

Tuesday 15 October, 1.00pm – 2.00pm

The Sky High Room, Level 2, JHB Carr Stand, Warwick Farm Racecourse (next door to The William Inglis Hotel).

StateCover is committed to working with its members to address mental health in the workplace. At the lunch, Linda Bostock, Chief Executive Officer, StateCover will outline the Mentally Healthy Councils Strategy, followed by special guest Chelsea Pottenger, a mental health expert, who will have attendees walking away with some brilliant tools to empower you to be more mindful, more productive and more resilient.

Sponsored by **StateCover**



## Australian Local Government Women's Association (ALGWA NSW) Breakfast

Wednesday 16 October, 7.15am for 7.30am start – 8.45am

The Big Barn, The William Inglis Hotel

You will need to be pre-booked as part of the conference registration process. Tickets will be provided to you at registration when you collect your lanyard.

In conjunction with the LGNSW Annual Conference, the Australian Local Government Women's Association NSW invites you to a panel discussion on the topic Women in Leadership. Joseph La Posta, Chief Executive, Multicultural NSW will introduce our panellists:

- Sarah Hill, Deputy Secretary, Strategic Directions and Integration, Department of Planning, Industry and Environment
- Morven Cameron, Chief Executive Officer, Lake Macquarie Council
- Anne Dennis, Presiding Chairperson, NSW Aboriginal Land Council

They will share their experiences, challenges and advice. Ellen Fanning will facilitate an interactive discussion with the panel and audience. Come with your questions ready.

Sponsored by **Multicultural NSW**



**Multicultural NSW**

LGNSW ANNUAL  
CONFERENCE  
PROGRAM 2019

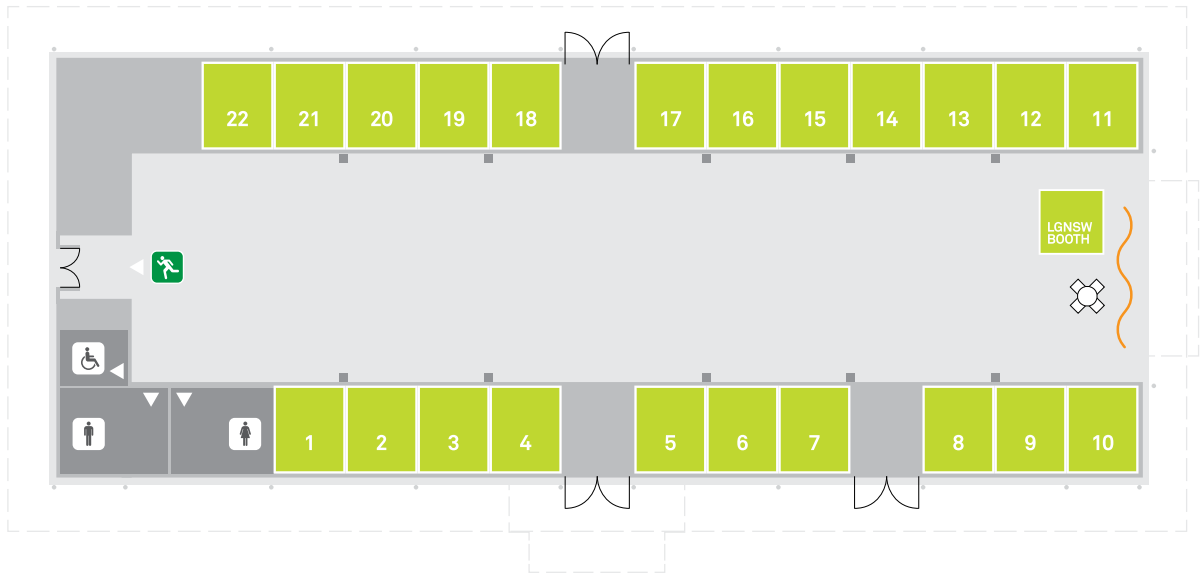
# TRADE EXHIBITION FLOOR PLAN

LGNSW ANNUAL  
CONFERENCE  
PROGRAM 2019

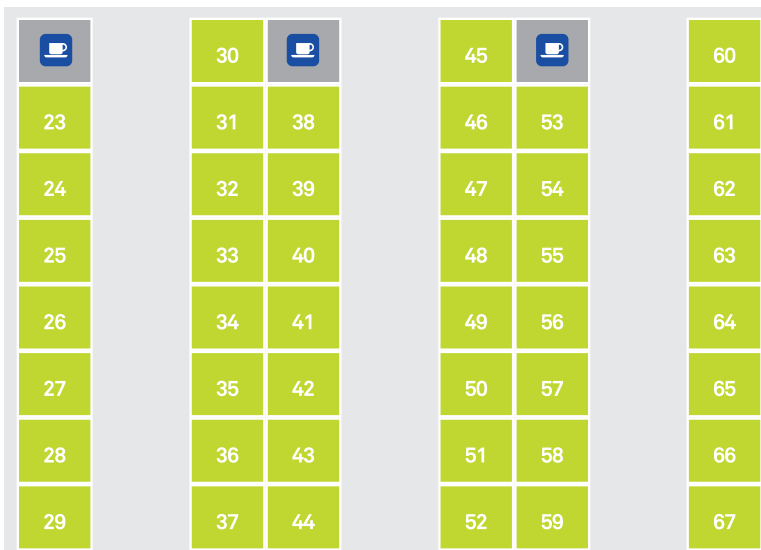
10



VENUE LAYOUT



BOOTH LOCATIONS -  
THE BIG BARN



BOOTH LOCATIONS -  
THE STABLES

# EXHIBITORS

EXHIBITOR	BOOTH	VENUE
Archistar	43	The Stables
Ausco Modular	7	The Big Barn
Austek Play	37	The Stables
Australian Institute Of Company Directors	32	The Stables
Beyond The Hedge	29	The Stables
Campervan & Motorhome Club of Australia Limited	25	The Stables
CivicRisk Mutual	42	The Stables
Clearasound Pty Ltd	45	The Stables
ClubsNSW & Australian Hotels Association NSW	Coffee Cart Sponsor	
Copyright Agency	1	The Big Barn
COTA NSW Strength for Life	67	The Stables
Department of Communities and Justice	3	The Big Barn
Dial Before You Dig NSW/ACT Inc	60	The Stables
Exeloo Limited	39	The Stables
Landcare NSW	50	The Stables
Hall & Wilcox	19	The Big Barn
IPWEA (NSW)	24	The Stables
Japan Local Government Centre (CLAIR Sydney)	47	The Stables
JLT	15	The Big Barn
Kernow Environmental Health	30	The Stables
Lenovo	66	The Stables
Local Government NSW	10	The Big Barn
Local Government Procurement	41	The Stables
Local Government Super	18	The Big Barn
LRM Fire & Rescue	57	The Stables
Maddocks	2	The Big Barn
Marsdens Law Group	59	The Stables
Michael Hughes Foundation	52	The Stables
Morrison Low Consultants	48	The Stables
Multicultural NSW	38	The Stables

EXHIBITOR	BOOTH	VENUE
Netstar Australia Pty Ltd	62	The Stables
NSW Environmental Protection Agency (EPA)	12	The Big Barn
NSW Office of Emergency Management	16 & 17	The Big Barn
NSW Small Business Commissioner	4	The Big Barn
NSW Treasury Corporation (TCorp)	36	The Stables
Office of Local Government	21 & 22	The Big Barn
Paul-Tec Australia	28	The Stables
PMH Insights Inc.	40	The Stables
Public Works Advisory	8	The Big Barn
Quik Corp	11	The Big Barn
Randstad	51	The Stables
Riding for the Disabled Association (NSW)	58	The Stables
Robot Mowers Australia	44	The Stables
Service NSW	Outdoor Vehicle Site	
StateCover	5 & 6	The Big Barn
Statewide Mutual	13 & 14	The Big Barn
Stilmark Structures Pty Ltd	33	The Stables
TAFE Enterprise	9	The Big Barn
Teletrac Navman	20	The Big Barn
TPG Network Pty Ltd	53	The Stables
Transport for NSW	Delegate Lounge	
UniPhi	49	The Stables
Virtus Heritage	61	The Stables
Volvo Group Australia Pty Ltd	46	The Stables
Waverton Hub	54	The Stables

# EXHIBITORS

LGNSW ANNUAL  
CONFERENCE  
PROGRAM 2019

12

## Archistar.ai

Archistar uses artificial intelligence to simplify the Development Application process. We reduce the friction points between developers, designers and government. The platform provides automated compliance checking in a fraction of the time. You can use it to work with applicants to help them come up with compliant plans.

Booth: 43 – The Stables



Ausco Modular, Australia's leading modular construction company, has collaborated with the AFL, Football NSW, Northern NSW Football and other major sporting codes to deliver facilities that meet the needs of communities from a design, cost, quality and project delivery perspective. Learn more at [www.ausco.com.au/sports-facilities](http://www.ausco.com.au/sports-facilities).

Booth: 7 – The Big Barn



An Australian owned and operated business since March 2000, Austek Play supplies and installs commercial-grade playground and exercise equipment across Qld, NSW and NT. We specialise in custom designed spaces for users of all ages and provide complete turnkey packages from concept through to construction, handover and post-installation support.

Booth: 37 – The Stables

## AUSTRALIAN INSTITUTE of COMPANY DIRECTORS

The Australian Institute of Company Directors (AICD) provides leadership on director issues and promotes excellence in governance through education, director development and advocacy. We have a membership of more than 43,000 including directors and senior leaders from business, government and the not-for-profit sectors.

Booth: 32 – The Stables

## CHANGING THE GAME Modular Sporting Facilities



PREFERRED SUPPLIER TO



13 62 11 [ausco.com.au/sports-facilities](http://ausco.com.au/sports-facilities)

## Trusted advisors to government and its agencies



### Stan Kondilios

Public sector client relationship partner  
T +61 2 8267 3830  
[stan.kondilios@hallandwilcox.com.au](mailto:stan.kondilios@hallandwilcox.com.au)



### Fay Calderone

Workplace relations partner  
T +61 2 8267 3232  
[faycalderone@hallandwilcox.com.au](mailto:faycalderone@hallandwilcox.com.au)



### Maurice Doria

Property and projects partner  
T +61 2 8267 3835  
[maurice.doria@hallandwilcox.com.au](mailto:maurice.doria@hallandwilcox.com.au)

[smarterlaw.com.au](http://smarterlaw.com.au)

**IW** Hall & Wilcox  
smarter law



Beyond the Hedge is a full-service creative agency, specialising in working with councils and government agencies. We understand the unique needs of our government clients and have a proven track-record in delivering simple, compelling, and functional design solutions. We provide services across branding, graphic design, digital design and data visualisation.

Booth: 29 – The Stables



Campervan & Motorhome Club of Australia (CMCA) is the largest RV Club in Australia, offering benefits to its Members and local government areas and providing the opportunity for local government to target the RV consumer to increase their tourism exposure. Ask about our CMCA RV Parks and Dump Point incentive program.

Contact Richard Barwick, CEO, 0419 482 890

Booth: 25 – The Stables




CivicRisk Mutual provides risk management and insurance solutions to 19 NSW councils. The insurance mutual has been managing councils' risks for over 30 years. It is wholly owned and managed by councils, providing protection for motor, property, liability and other general risks.

Booth: 42 – The Stables



ClearaSound (formerly Printacall) is Australia's leading specialist in the design and installation of Hearing Loops, Augmentation Systems & PAs. Our team's extensive clinical and technical background knowledge ensures our solutions are designed to provide the best possible outcome for every situation, on time and on budget every time.

Booth: 45 – The Stables

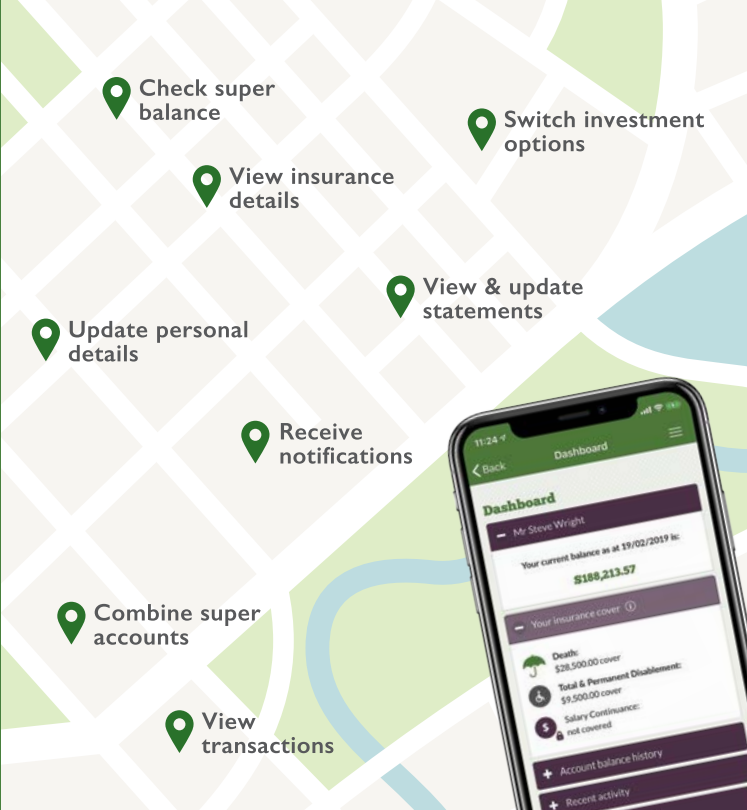


**Our members are now managing their super... almost anywhere.**

By downloading the Local Government Super app to your mobile, you can manage your super when it suits you and where it suits you.



You can perform a wide range of functions from checking your balance to switching investment options and combining your super accounts. You can also get notifications about your super sent straight to your phone.

To find out more about the app or if you're interested in joining Local Government Super, just visit [lgsuper.com.au](http://lgsuper.com.au)



- Check super balance
- View insurance details
- Update personal details
- Combine super accounts
- View transactions
- Switch investment options
- View & update statements
- Receive notifications

Issued by LGSS Pty Limited (ABN 68 078 003 497) (AFSL 383558) as Trustee for Local Government Super (ABN 28 901 371 321) (Local Government Super). This advertisement contains general information only and does not take into account your personal objectives, situation or needs. You should consider obtaining professional financial, taxation and/or legal advice tailored to your personal circumstances prior to making any financial decision.

# EXHIBITORS

LGNSW ANNUAL  
CONFERENCE  
PROGRAM 2019

14



NSW's clubs and pubs make a substantial contribution to local communities across NSW. Clubs and pubs employ 118,000 people, serve as important social hubs for millions of members and patrons and provide \$163 million in direct and in-kind support to thousands of charities, grassroots sporting teams and community groups.

[Coffee Cart Sponsor](#)



The Department of Communities and Justice (DCJ) was formed in 2019 with a focus on building stronger communities in NSW.

The DCJ Ageing team supports this goal by creating an environment where people experience the benefits of living longer and enjoy opportunities to participate and be included in their communities.

[Booth: 3 – The Big Barn](#)



The Copyright Agency represents over 40,000 members, including publishers, researchers and journalists. We provide licensing solutions to councils to help meet their obligations under the Copyright Act 1968 (Cth) and ensure they legally reuse content created by others. Licensing revenue is distributed to our members, fostering the creation of new content. [www.copyright.com.au](http://www.copyright.com.au)

[Booth: 1 – The Big Barn](#)



The Council on the Ageing NSW (COTA NSW) is the peak organisation for people over 50 in our state.

Strength for Life is an evidence-informed program, developed out of research by RMIT and improved through ongoing university partnerships. COTA NSW seek to work with LGAs to collaborate on implementation across the state.

[Booth: 67 – The Stables](#)



**Good Governance  
is critical for Local  
Government**

An important part of **good governance** is meeting a Council's legislative obligations, which includes obligations under the **Copyright Act 1968** (Cth). As Council employees are increasingly required to use information from a range of copyright sources, with little time to assess permission or licensing criteria for reuse, leading Councils are turning to umbrella copyright licensing to help **streamline workflow and ensure compliance** while letting staff get on with their jobs.

[Visit us Stall 1 to find out more about how our licensing solutions support Local Government](#)

**COPYRIGHTAGENCY** [www.copyright.com.au](http://www.copyright.com.au)

**Your cup  
of coffee  
is proudly  
brought to  
you by the  
clubs & pubs  
of NSW.**

**Enjoy!**







Dial Before You Dig is free and can save you millions of dollars – or even save a life. It's the law in NSW. Councils can apply to receive information on excavations taking place in your Local Government Area. Visit the stand and see our mobile website for smartphones and tablets.

Booth: 60 – The Stables



Intelligent Public Toilet Systems

Crafted with innovation and design excellence second to none.

**Built to Last** - Using the finest materials

**Inclusion** - Hygienic, comfortable and respectful environments for all

**Safety** - A specialist helping you provide a safe and secure public asset

**Hygiene** - Pioneering touchless systems to protect users

www.exeloo.com Toll Free 1800 994 350

Booth: 39 – The Stables



Hall & Wilcox is a leading Australian independent business law firm and a trusted adviser to government and its agencies throughout NSW. Our in-depth understanding of public sector processes, including the unique legislative and regulatory environment, means we have experience across the legal, commercial and political issues within this sector.

Booths: 19 – The Big Barn



The Institute of Public Works Engineering Australasia – NSW Division is a not-for-profit organisation whose mission is to enhance the quality of life of NSW communities through excellence in public works and services.

IPWEA NSW is recognised as the leading professional association that effectively informs, connects, represents and leads public works professionals in NSW.

Booth: 24 – The Stables

Department of Communities and Justice

# Ageing Team



**Working with Local Governments to help seniors enjoy the benefits of living longer in NSW**

Find out more about our grants and resources to help your council support older people:

[www.facs.nsw.gov.au/inclusion/ageing](http://www.facs.nsw.gov.au/inclusion/ageing)  
[Ageing@facs.nsw.gov.au](mailto:Ageing@facs.nsw.gov.au)

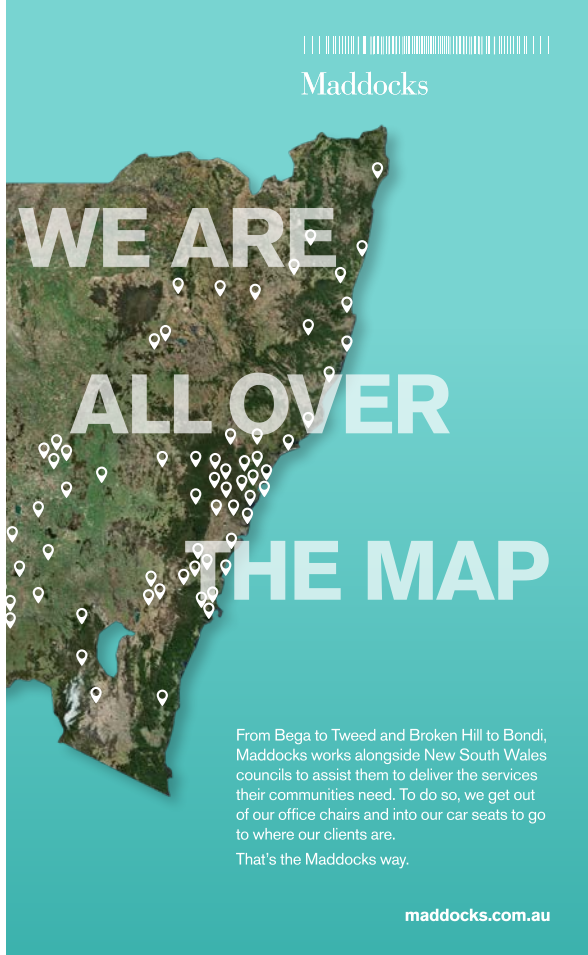


Images: Penrith & Fairfield City Council's Grandparent's Day 2018, funded through a DCJ grant



Maddocks

# WE ARE ALL OVER THE MAP



From Bega to Tweed and Broken Hill to Bondi, Maddocks works alongside New South Wales councils to assist them to deliver the services their communities need. To do so, we get out of our office chairs and into our car seats to go to where our clients are.

That's the Maddocks way.

[maddocks.com.au](http://maddocks.com.au)

# EXHIBITORS

LGNSW ANNUAL  
CONFERENCE  
PROGRAM 2019

16



The Japan Local Government Centre (CLAIR, Sydney) is a semi-government, non-profit organisation jointly established by all Japanese prefectures and municipalities. CLAIR Sydney provides support to Australian and Japanese local governments seeking sister city relationships and promotes regional Japan as a travel destination.

Please visit our booth in the exhibition area, or visit: [www.jlhc.org.au](http://www.jlhc.org.au)

**Booth: 47 – The Stables**



As a supporter of LG professionals locally and nationally, JLT understands the importance of delivering tangible value and services to local governments and associated organisations. We are committed to supporting councils in their delivery of services to the community by providing innovative risk and insurance solutions.

**Booth: 15 – The Big Barn**



Kernow has provided environmental health and immunisation services to local councils for more than 20 years. We are proven and innovative in the way we deliver core regulatory services. We have solutions for councils that have workforce shortages, are required to reduce costs and maintain quality services.

**Booth: 30 – The Stables**



Landcare NSW & Greater Sydney Landcare Network: the 'Landcare' movement is a community-based approach to managing and protecting natural resources through conservation, education and community empowerment. In partnership with councils, volunteers and landholders, we help transform landscapes through land conservation, biodiversity works, developing sustainable agricultural practices and protecting bushland reserves.

**Booth: 50 – The Stables**



**JLT PUBLIC SECTOR**  
IDENTIFYING RISKS AND MANAGING THEM  
THROUGH INNOVATIVE SOLUTIONS



Lenovo is focused on a bold vision to deliver smarter technology for all, we are developing world-changing technologies that create a more inclusive and sustainable digital society. By designing, engineering and building the world's most complete portfolio of smart devices and infrastructure, we are also leading an Intelligent Transformation – to create better experiences and opportunities for millions of customers around the world. To find out more visit [thinkfwd.com.au](http://thinkfwd.com.au).

Booth: 66 – The Stables



Local Government NSW (LGNSW) is the peak industry organisation that advocates for and represents the interests of the NSW local government sector. LGNSW provides a range of advocacy services for members including management solutions, learning solutions, industrial relations, legal advice, political advocacy and policy advice. Experienced LGNSW staff are available at the stand to answer delegates' questions. [lgnsw.org.au](http://lgnsw.org.au)

Booth: The Big Barn



Local Government Procurement (LGP) is a business arm of LGNSW.

LGP provides fully integrated procurement services: establishing contract panels, consulting and procurement training to NSW councils, not-for-profit organisations, universities and State Government agencies/departments.

LGP is a prescribed entity under s55 of the *Local Government Act 1993* (NSW) and *Local Government (General) Regulation 2005* (NSW).

Booth: 41 – The Stables



**BE  
READY  
FOR  
TOMORROW**

**BE TRAINED BY THE BEST**  
Contact us at [tafensw.edu.au/enterprise](http://tafensw.edu.au/enterprise)  
or phone 1300 045 737




**ENTERPRISE**

RTO 990003 | CRICOS 00591E | HEP PRV12049



**We're for Business**

**OUR NETWORK, YOUR BENEFIT**  
We own and operate one of Australia's largest and most advanced national networks complete with metro, regional, inter-capital and international assets. This means we can continually drive innovative solutions, providing considerable value to your business.

**OUR SUPPORT SYSTEM**  
From our experienced implementation and customer service team, to our award winning account management and solution architects, our focus is delivering the right level of support for your business.

**OUR PRODUCT SUITE**  
From design planning to implementation, we can deliver innovative, scalable and affordable solutions based on your business needs and requirements.

**DATA** **INTERNET**  
**VOICE** **CLOUD**



Talk to us today, call 13 89 28 or visit [tpg.com.au/enterprise](http://tpg.com.au/enterprise)

# EXHIBITORS

LGNSW ANNUAL  
CONFERENCE  
PROGRAM 2019

18



Local Government Super manages more than \$12 billion of retirement savings for current and former local government employees across New South Wales.

Our aim is to enhance the retirement income of our members by investing in the long-term sustainability of our community and our environment.

We're very proud of our close relationship with Local Government NSW.

[Booth: 18 – The Big Barn](#)



LRM Fire & Rescue provide solution-focused services including bushfire fuel hazard mitigation, planning, fuel modification, remote area firefighting, hazardous tree removal, post-mitigation consolidation and reporting. Based in Muswellbrook NSW, our highly skilled and professional team also offer response services including asset protection, bushfire and standby for high-risk activities.

[Booth: 57 – The Stables](#)



Maddocks

Maddocks provides premium legal services to governments, corporations and businesses throughout Australia and internationally. We are proud of a long history in advising local government clients. We are equipped to help councils manage their legal risks and fulfil their primary role of providing services, infrastructure and facilities to their communities.

[www.maddocks.com.au](http://www.maddocks.com.au)

[Booth: 2 – The Big Barn](#)



Marsdens Law Group provides legal services to more than 50 councils and has done so for more than 30 years. Adam Seton, an Accredited Specialist in Local Government and Planning Law, heads a team that has an unrivalled dedication, ensuring councils receive premium legal services so they can achieve the best outcomes for their communities. [www.marsdens.net.au](http://www.marsdens.net.au)

[Booth: 59 – The Stables](#)

We've made it  
easier to open  
or expand your  
small business

Get started with

- ✓ a free dedicated business concierge
- ✓ handy how to guides
- ✓ an online dashboard

For more information  
visit [service.nsw.gov.au](http://service.nsw.gov.au)





Michael Hughes Foundation is a NSW based charity with a focus on the response to cardiac arrest and Turning Bystanders into First Responders in medical emergencies. Our advocacy work and service offering focus on raising awareness, education in CPR, placement of defibrillators, accredited first aid training and first aid kits.

The Foundation is a panel provider to the NSW Office of Sport Local Defibrillator Grants Program.

**Booth: 52 – The Stables**



Morrison Low is a management consultancy company specialising in local government. We pride ourselves on building long-term relationships with our clients. With a team of people who have worked in virtually every aspect of local government, across Australia and internationally, we take a collegiate approach towards developing practical solutions.

**Booth: 48 – The Stables**



Multicultural NSW aims to build and maintain a cohesive and harmonious multicultural society that enriches the lives of all the people of NSW. We are at the forefront of engagement across the NSW language services industry, ensuring sustainable provision of quality translation and interpreting services.

**Booth: 38 – The Stables**



A SUBSIDIARY OF ALTRON

Netstar Australia is a trusted brand with over 20 years of experience in GPS Telematics.

We provide vehicle and fleet tracking, innovative fleet management solutions for all-size business and commercial fleets, lone worker safety, electronic work diaries solutions and vehicle camera solutions. We aim to provide you with the best IoT results.

**Booth: 62 – The Stables**

STRENGTH. STABILITY. INTEGRITY.



## AUSTRALIA'S LARGEST LOCAL GOVERNMENT SELF-INSURANCE POOL

We work alongside NSW councils to reduce their exposure to risk and ensure they get the most from our industry leading Mutual



# EXHIBITORS

LGNSW ANNUAL  
CONFERENCE  
PROGRAM 2019

20



The NSW Environment Protection Authority protects our environment and the community by being a leader, partner and protector.

We work with the community, business, industry and government to reduce pollution and waste, maintain ecologically sustainable development, reduce the risks to human health and prevent degradation of the environment.

Booth: 12 – The Big Barn



The NSW Office of Emergency Management supports local councils to build capability and capacity to become disaster ready. We provide guidance, tools and resources so local councils and communities can better prepare for, respond to, and recover from disasters.

When disaster strikes, we support local councils to lead their communities through the recovery.

Booth: 16 & 17 – The Big Barn



The Office of Local Government leads the NSW Government's efforts to strengthen the local government sector through modern and effective regulation. OLG is committed to working collaboratively with local councils to help them operate at the highest possible level and deliver key services and infrastructure to their local communities

Booth: 21 & 22 – The Big Barn



Service NSW, in partnership with the NSW Small Business Commission, Better Regulation Division and councils, supported by Commonwealth Government funding, provides free personalised support to help start, run or grow a small business. The service helps business owners navigate across three levels of government to achieve their business goals. [mybusiness.service.nsw.gov.au](http://mybusiness.service.nsw.gov.au)

Booth: 4 – The Big Barn

**NSW GOVERNMENT** | **Multicultural NSW**

- CULTURAL COMPETENCE TRAINING
- TRANSLATION SERVICES
- INTERPRETING SERVICES
- CELEBRATING DIVERSITY GRANTS
- LANGUAGE PROFICIENCY TESTING FOR YOUR BILINGUAL WORKERS
- MULTICULTURAL MEDIA MONITORING

Multicultural NSW offers a range of services to support the people in our state who come from more than 307 ancestries and speak 215 languages. Contact us today to find out how we can support your diverse community.

[multicultural.nsw.gov.au](http://multicultural.nsw.gov.au)

**EXCELLENCE IN INFRASTRUCTURE**

Public Works Advisory  
[publicworksadvisory.nsw.gov.au](http://publicworksadvisory.nsw.gov.au)



Since 1977 Paul-Tec has provided innovative security technology solutions primarily for government and commercial clients, specialising in REMOTE VIDEO GUARDING solutions. Hired 'rapid deployment' remote video guarding towers are an excellent proven alternative to on-site guards, 'stopping crime before it happens'. ANTI-ILLEGAL DUMPING technology solutions are also available.

Booth: 28 – The Stables



PMH Insights LG Framework methodology covers the council's entire Integrated Planning and Reporting, namely strategic, corporate, section and master/governance plans. We select the best systems for your council to track, monitor and report on all your plans. Staff appraisal, community dashboard, risk, council resolutions and capital project options are available.

Booth: 40 – The Stables



Public Works Advisory supports local and state government agencies to deliver critical infrastructure initiatives by providing expert advisory, planning, delivery and support services. We bridge the gap between government and the private sector, helping clients to maximise value, optimise costs and manage risks in their infrastructure programs and the lifecycle management of their assets.

Booth: 8 – The Big Barn



Quik Corp's relationship with local government spans over 30 years. We're proud to introduce our range of chemical free-steam units and BioWeed; our organic herbicide alternative for targeting weeds in public areas that reduces the use of synthetic herbicides in sensitive areas.

With these exciting new products, we offer a tailor-made approach to your weed control activities.

Booth: 11 – The Big Barn



Office of Emergency Management

## Is your council disaster ready?

Over the past 10 years, nearly every LGA has been impacted by disaster.

Councils play a vital role in managing emergencies. **How prepared is your community?**



Visit our stall for free disaster preparedness tools and resources.

# EXHIBITORS

LGNSW ANNUAL  
CONFERENCE  
PROGRAM 2019

22



Randstad is a preferred supplier, providing temporary, permanent & executive recruitment to Local Government. Our NSW Supplier Agreements include:

- Local Government Procurement
- Managed Service Provider Supplier Agreements
- NSW Government Contingent Workforce Prequalification Scheme (0007)
- Southern Sydney Regional Organisation of Councils (SSROC)

For more information contact Joshua Rao: 0410 508 394 or [joshua.rao@randstad.com.au](mailto:joshua.rao@randstad.com.au)

**Booth: 51 – The Stables**



RDA(NSW), is a volunteer organisation providing equine assisted activity for people with disabilities to develop and enhance abilities across NSW.

RDA(NSW) opened in 1972 and is an Incorporated NFP Company with 40 centres. RDA(NSW) is an RTO and caters for over 1,700 riders supported by 1,300 volunteers including qualified Coaches, Assistant coaches and trained Assessors.

**Booth: 58 – The Stables**




Robot Lawn Mowers Australia was founded on the need to perform status quo tasks in a better, more efficient way.

Certain jobs can be performed by humans only. We free your staff to do the more delicate, urgent or important tasks while our robots look after green areas.

**Booth: 44 – The Stables**

Service NSW is making it easier for small business owners in NSW to start,




## The Complete Solution For Your Fleet

Teletrac Navman offers:

- Electronic Work Diary Solution
- Integrated Job Management
- Approved Fuel Tax Solution
- Pre-Trip Checklists
- Mass Management
- Driver Behaviour Alerting and Reporting
- Easy Compliance with NHVAS Responsibilities

Visit our stand to find out more about our transport solutions.

To learn more, call 1300 111 477 or visit [TeletracNavman.com.au](http://TeletracNavman.com.au)

TELETRAC NAVMAN 



## We've made it easier to open or expand your small business

Get started with

- ✓ a free dedicated business concierge
- ✓ handy how to guides
- ✓ an online dashboard



For more information visit [service.nsw.gov.au](http://service.nsw.gov.au)





run or grow a business. A Business Concierge service provides free personalised guidance. The digital platform features how-to guides and a personalised dashboard so business owners can track the steps required to achieve their goals.

Booth: Outdoor Vehicle Site



As the only member-owned, specialised workers' compensation insurer for NSW councils, our 'soul' purpose is to create mutual value for our members. We deliver on this by going beyond premiums and claims, partnering with our members to ensure their employees' health, safety and wellbeing. Visit us at stand 5 and 6 to learn more.

Booth: 5 & 6 – The Big Barn



Since 1993, Statewide Mutual has provided stable insurance premiums, sound risk management and industry-specific claims administration to our members. We're the largest member-owned local government self-insurance scheme in Australia, working in partnership with the vast majority of NSW councils.

Our proud history of mutuality results in unmatched buying power, financial strength and stable premiums for our members year after year.

Booth: 13 & 14 – The Big Barn



Stilmark Structures specialises in innovative design, fabrication and supply of monopole, towers and mast structures.

Totem Wi-Fi gets people connected to your message on any mobile device, even when outside of a network coverage area. It provides a dedicated, standalone, self-powered, free-to-use local network allowing users to access your audio, video, PDFs or written content instantly.

Booth: 33 – The Stables



Office of Local Government

“Local and State governments working together to better serve communities”



### The Office of Local Government

thanks our councils for the crucial role they play in delivering the facilities and services their communities need and deserve.

#### Local government snapshot

- 01** There are 128 councils in NSW, with 1300 councillors and 45,000 staff
- 02** NSW councils spend more than \$11 billion on infrastructure, facilities and services annually
- 03** Councils manage community assets worth more than \$150 billion including 165,213km of roads, 460 public pools and 1,835 community halls
- 04** Since 2011, the State Government has provided more than \$9 billion to NSW councils to deliver and improve local infrastructure, services and facilities
- 05** The State borrowing facility – TCorp – has provided more than \$647 million in safe, secure and low-cost loans to NSW councils to help them fund community infrastructure
- 06** The infrastructure backlog across the local government sector has been reduced from \$7.5 billion in 2010-11 to \$3.6 billion in 2017-18

# EXHIBITORS

LGNSW ANNUAL  
CONFERENCE  
PROGRAM 2019

24



TAFE Enterprise offers customised and flexible training courses, helping local governments in NSW respond to market changes and growing their business through their people. As Australia's largest training provider, we train your employees with industry experts, utilising the latest industry practices and technology to deliver training wherever, whenever and however.

Booth: 9 – The Big Barn



TCorp provides best-in-class infrastructure debt financing and investment opportunities for eligible local councils, drawing on our financial market's expertise and significant economies of scale. With A\$107bn of funds under management, TCorp is a top five Australian asset manager and is the central borrowing authority of NSW, with a balance sheet of A\$75bn.

Booth: 36 – The Stables

TELETRAC NAVMAN



Teletrac Navman is Australasia's leading fleet and asset management solutions provider, leveraging location-based technology and services for managing fleets of all sizes. With specialised products that deliver greater visibility into real-time insights and analytics, Teletrac Navman helps companies and government organisations make better business decisions that enhance productivity and profitability.

Booth: 20 – The Big Barn



TPG is one of Australia's largest telecommunications infrastructure companies, delivering innovative solutions for retail consumers, small business, enterprise and government, and wholesale customers. Key to TPG's strategy is owning and operating its own network, and thereby controlling the quality, performance and pricing of its products and services.

Booth 53 – The Stables

**ORGANIC WEED  
CONTROL FOR  
A SUSTAINABLE  
FUTURE.**

- Chemical-free steam weed control
- Organic Herbicide



Visit us at  
The Barn

**QUIK CORP**

[quikcorp.com.au](http://quikcorp.com.au)

**A leader, partner,  
protector for NSW**



Proud sponsors of Local Government NSW  
Annual Conference 2019

Find us on   

**NSW EPA**

[www.epa.nsw.gov.au](http://www.epa.nsw.gov.au)



**Transport  
for NSW**

It's an exciting time at Transport for NSW. Our plan will make trips faster, easier and safer. Our vision for cities and regions is of connected roads and public transport with higher capacity and more choices. Our vision comes to life by partnering with local government and investing more than

\$56.2billion in transport infrastructure. [www.future.transport.nsw.gov.au](http://www.future.transport.nsw.gov.au)

**Booth: Delegate Lounge**

**LGNSW ANNUAL  
CONFERENCE  
PROGRAM 2019**

**25**



UniPhi is a multi-award winning, SaaS, mobile and web-based project and portfolio software. It covers the end-to-end life cycle of projects and engages with all people working within the project environment. UniPhi provides adaptive solutions to complex problems, allowing organisations to stop improvising solutions and start maximising opportunities.

**Booth: 49 – The Stables**



Virtus Heritage is one of Australia's leading heritage and archaeology consultancies with an acclaimed reputation for our collaborative approach to heritage projects and innovation in geophysical applications for heritage, particularly cemeteries and unmarked graves. Our team offers extensive experience in the assessment and management of archaeological sites and cultural landscapes.

**Booth: 61 – The Stables**



**Volvo Group Australia**

Since 1972, Volvo Group Australia has manufactured Volvo and Mack Trucks from its factory in Wacol, Queensland. We also distribute UD Trucks, the best Japanese truck on the market. As the largest automotive manufacturer in Australia, we recognise that our customers face some of the harshest driving conditions in the world.

**Booth 46 – The Stables**



**The Waverton Hub**  
Healthy active ageing

An Australian model for healthy active ageing in your own community.

Older Australians doing it for themselves!

A community organisation run by members for members, enabling us to age well in our own homes, meaningfully and affordably.

The benefits of membership are many; a healthy body, active mind, meaningful friendships, help with small and large tasks, connections to aged care service providers and a sense of belonging.

**Booth 54 – The Stables**

# SPONSORS

## Elite Sponsor



## Premier Sponsor



## Planning Sponsor



Office of  
Emergency Management

## Distinguished Sponsors



## Delegates Lounge



## Coffee Cart Sponsors

## ALGWA Breakfast Sponsor



## Vehicle Sponsor



## Destination Sponsor



Valued Sponsors



COPYRIGHTAGENCY



TELETRAC NAVMAN



# NOTES

---

LGNSW ANNUAL  
CONFERENCE  
PROGRAM 2019

28

# NOTES

---

LGNSW ANNUAL  
CONFERENCE  
PROGRAM 2019

# LGNSW

**Location:** Level 8, 28 Margaret Street, Sydney NSW 2000

**Mailing Address:** GPO Box 7003 Sydney, NSW 2001

**Email:** [lgnsw@lgnsw.org.au](mailto:lgnsw@lgnsw.org.au)

**Phone:** 02 9242 4000

**Fax:** 02 9242 4111

    #LGNSW2019